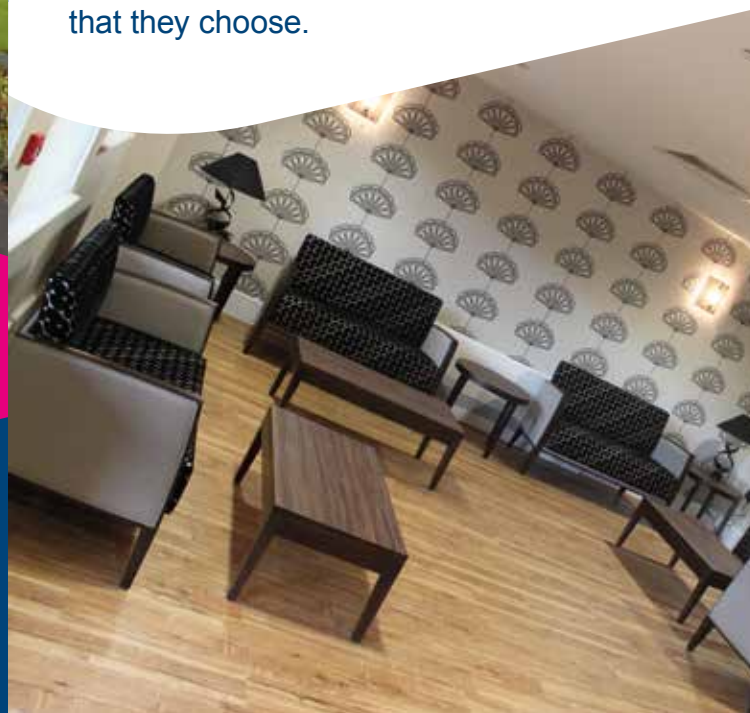




Thrive @ United Welsh

United Welsh is a not-for-profit organisation providing housing and related services to people in South Wales. We currently manage nearly 5,000 properties across 11 local authorities.

Our Thrive team manages our specialist housing and other services that help people have the lives and independence that they choose.



Extra Care Housing



What is Extra Care?

Our Extra Care provides:

- Your own front door and self-contained flat with the freedom to come and go as you choose
- Level access throughout
- A high quality living environment including extensive grounds
- Intensive on-site housing management services
- Advanced security systems
- Access to care services
- A strengths-based support hub
- Wellbeing activities
- 24-hours telecare services
- Nutritious and delicious catering
- Membership of our Together Project, offering a wealth of time-banking, social activities, volunteering and community projects.

Why choose Extra Care?

- Extra Care maintains and builds informal support networks
- Extra Care provides an accessible environment that can reduce the need for care and support
- Extra Care can prevent or delay residential care
- Extra Care can enable a move to more independent living from more institutional settings
- Extra Care is viewed more positively than residential care
- Extra Care costs less than residential care.

Who Can Live There?

Anybody over the age of 50 can apply to live in Extra Care - we aim to build a balanced, enabling community built up of people with different levels of care and support needs and people with none.



How much does it cost?

Rent and service charge (including 2 course lunch every day)- £266 - £335* per week depending on single or double occupancy, eligible for Housing Benefit

Care - domiciliary care rate based on individual package - Community Care funded

Fuel, electric and water - included in service charge.

How to apply?

Applicants are asked to complete a self-assessment form which can be obtained directly from the scheme or via the Thrive team at United Welsh. If applicants are already in receipt of care, they will need a home visit by the social care provider to assess needs in order to be considered for a tenancy.

Contact Details

United Welsh
029 2085 8100
Thrive.admin@unitedwelsh.com

Plas Hyfryd
029 2084 9400

Llys Nant y Mynydd
01495 294400

*2015/16 cost



Tai Gofal Ychwanegol

Thrive @ United Welsh

Mae United Welsh yn gorff nid-er-elw sy'n darparu tai a gwasanaethau cysylltiedig ar gyfer pobl ar draws de Cymru. Ar hyn o bryd rydym yn rheoli bron 5,000 cartref ar draws 11 awdurdod lleol.

Tîm Thrive sy'n rheoli ein tai arbenigol a gwasanaethau eraill sy'n helpu pobl i fyw'n annibynnol yn ôl eu dymuniad.



Beth yw Gofal Ychwanegol?

Mae'n darparu:

- Drws ffrynt eich hun a fflat hunangynhaliol gyda'r rhyddid i fynd a dod fel y mynnwch
- Mynediad ar yr un lefel drwy'r fflat
- Amgylchedd byw safon uchel yn cynnwys gerddi estynedig
- Gwasanaethau rheoli tai ar y safle
- Systemau diogelwch datblygedig
- Mynediad i wasanaethau gofal
- Both cymorth cadarn
- Gweithgareddau lles
- Gwasanaethau telegofal 24 awr
- Gwasanaeth bwyd maethlon a blasus
- Aelodaeth o broject Gyda'n Gilydd, yn cynnig banc amser a gweithgareddau cymdeithasol, gwirfoddol a chymunedol.

Pam dewis Gofal Ychwanegol?

- Cynnal ac adeiladu rhwydweithiau cymorth anffurfiol
- Hwyluso mynediad yn gallu gostwng anghenion gofal a chymorth
- Helpu i osgoi neu bwylllo wrth ystyried gofal preswyl
- Galluogi pobl i symud i fyw'n fwy annibynnol o sefydliadau preswyl
- Delwedd gofal ychwanegol yn fwy positif na gofal preswyl
- Costio llai na gofal preswyl.

Pwy sy'n gallu byw yno?

Mae unrhyw un dros 50 oed yn gallu gwneud cais i fyw mewn cartref gofal ychwanegol - ein nod yw datblgu cymunedau cytbwys sy'n cynnwys pobl gydag anghenion gofal amrywiol, o ofynion dwys i ddim o gwbl.



Y pris?

Costau rhent a gwasanaeth (cynnwys cinio 2 gwrs bob dydd) £266 - £335* yr wythnos yn dibynnu ar gartref un neu ddau berson, cymwys ar gyfer budd-dal tai

Gofal - pris gofal preswyl yn seiliedig ar becyn unigol - cyllid Gofal Cymunedol

Tanwydd, trydan a dŵr - yn rhan o'r pris gwasanaeth.

Gwneud cais?

Bydd ymgeiswyr yn llenwi ffurflen hunanasesu gan y cynllun ei hun neu dîm Thrive yn United Welsh. Os bydd ymgeisydd eisoes yn derbyn gofal, bydd angen trefnu ymweliad â'u cartref gan y darparwr gofal cymdeithasol er mwyn asesu anghenion er cael eu hystyried ar gyfer tenantiaeth.

Manylion Cyswllt

United Welsh
029 2085 8100
Thrive.admin@unitedwelsh.com

Plas Hyfryd
029 2084 9400

Llys Nant y Mynydd
01495 294400